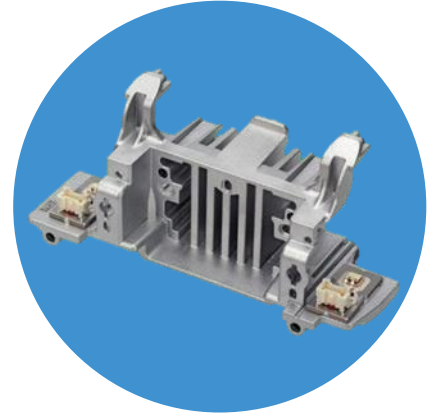


Fast Facts

LED Modules for Main Headlights

- Long lifetime
- Little energy consumption
- High temperature applications
- Miniaturisation
- Threedimensional design/ design freedom



Power LED Modules

- Multidimensional packaging
- Substrate technology: FR4, IMS, ceramic: aluminium oxide (Al₂O₃) or aluminium nitride (AlN)
- Control of multiple LED series/parallel connections possible
- Gluing technology
- DC/DC circuit technology & design

Thermal Management

The key to achieve high light intensities and at the same time high reliability lies in the optimum heat dissipation of the LEDs. The necessary technologies will be customised for your application.

Special Features

• Operation on 12 V / 24 V power supply systems possible	• Various interconnect technologies
• All LED types processable	- Flex print
• LEDs with bonds processable	- Preformed copper inlays
• Reference to LED chip center during production process	- Wire and ribbon bonding

Light Functions

Main light functions	Signal light functions
• High beam	• Blinker
• Low beam	• Daytime running light
• Bending light	• Positioning light
• Cornering light	• Side marker
• Special lights for in town/country road/highway/adverse weather	• Design elements
• Matrix LED head lights	
• Fog light	